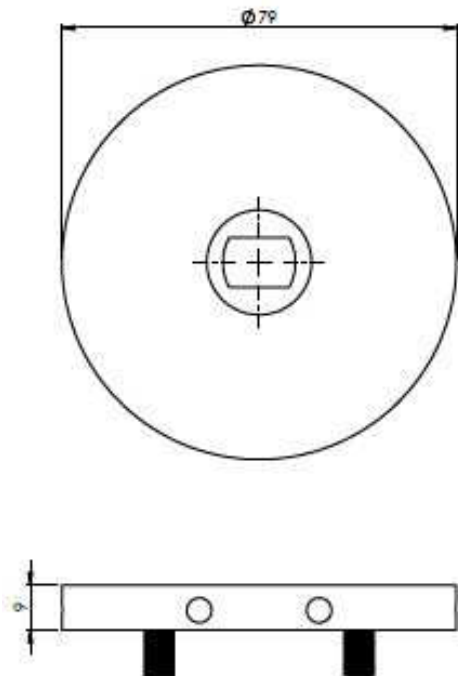


Design floor plate Renovation

Image :



Dimensions :



Articlenumbers:

VP-30

40-0200-066

Mertech Taatsdeursystemen

Rijssen, Nederland

Telefoon +31 (0)85 9026 222

E-mail info@mertech.nu

Website www.mertech.nu

Characteristics :

Suitable for type of systems:

PSI-100, PSI-150P and SF-100

Suitable for type of floors:

All

Invisible:

This design floor plate is an expression of beauty and strength.

Mountening:

4 holes; 10 mm drilling depth, invisible

Material:

Solid stainless steel

Rotation:

At the end or the middle of the door

Guarantee:

2 years

Adjustable:

3 mm to the front or to the back, 3 mm to the left or right

Floor heating friendly:

Due to its unique properties, this floor plate is suitable for all types of floors. Drilling to the max. 10 mm tile depth is sufficient, so the risk of damage to the floor heating is practically eliminated. The design floor plate provides an elegant appearance

Finish:

Standard stainless steel or black, other finishes on request

Measurements:

Thickness 9 mm, diameter 80 mm

Drilling depth:

Min. 8-10 mm

Application:

Extremely suitable when 2 different surfaces come together